



DRIVING
WOOD
TRANSFORMATION™



THE DATA YOU NEED. BEFORE IT'S TOO LATE.



BENEFITS

- Ensure the right log diet
- Improve machine performance
- Optimize processing speeds
- Raise productivity & lumber recovery
- Respond to issues faster
- Improve employee communication, collaboration, and performance

FEATURES

- Automated, analysis-ready reports
- Intuitive dashboards available in real time anywhere, anytime to everyone
- Configurable real-time alerts
- Part of PMP TEAMMATE™, our data historian and manufacturing platform

Sawing is the first wood transformation process. You understand that it's where you maximize your productivity and lumber recovery rate. PMP SOLUTIONS™ understands sawmills: several breakdown lines feeding the trimming line. We also understand the challenges associated to synchronizing all the lines in the sawmill so they deliver what they're supposed to, combined to poorly functioning equipment and the log diet. We all understand that this translates into lower lumber recovery rates and operational effectiveness.

As such, sawing is the first place to improve. Automation and complexity being at all-time highs, it's difficult to see if you're efficient through reporting and volume only. You simply react to issues like more waste or a lower lumber recovery rate. PMP WE SAW™ will help you stabilize every aspect of your sawmill: ensure the right log diet, correct machine performance, and best processing speeds. The result: optimal operational effectiveness.

Specifically designed for the wood transformation industry by our team of specialists and part of PMP TEAMMATE, PMP WESaw offers the following benefits and features:

ENSURE THE RIGHT LOG DIET

Your log diet is the first process to stabilize to ensure that you get the most out of your sawmill. By providing the infeed operator accurate live information about various key performance indicators configured within target ranges, he or she can make spur-of-the-moment adjustments to the diet, thus making sure the production run yields the most.

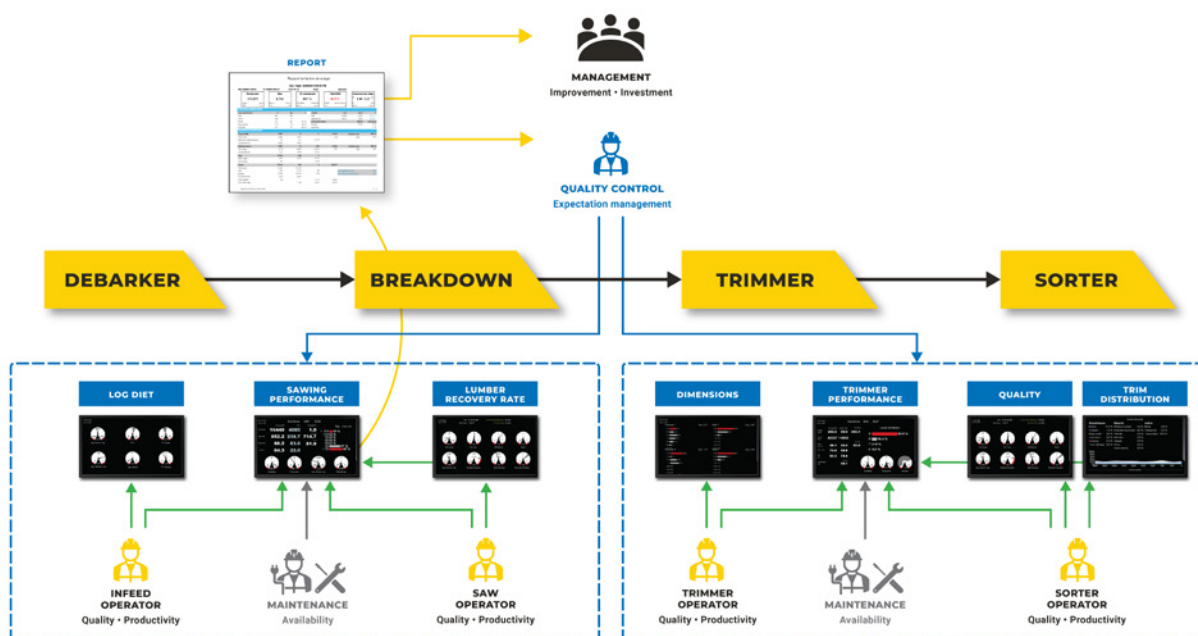
IMPROVE MACHINE PERFORMANCE & OPTIMIZE PROCESSING SPEEDS

The right indicators to the right people at the right time empower factory floor staff to identify issues with machine performance and processing speeds, which, in turn, enables them to act appropriately—adjusting speeds or performing necessary maintenance to improve production before runs are over.

RAISE PRODUCTIVITY AND LUMBER RECOVERY

We understand that your reporting, although digital, is still managed manually and usually the responsibility of a single person. Producing reports usually involves collecting relevant data from every piece of connected equipment in your sawmill, and then manipulating it in a spreadsheet to get the desired business intelligence (BI). This is a long and tedious process.

Our manufacturing model is designed for actual sawmills and enables PMP WESaw to aggregate, organize, and analyze the data from your equipment, and then present reliable results in such a way that everyone—from operator to management—gets the intelligence they need, when they need it.



Timely analysis-ready reports from PMP WESaw will often reveal variations that operations and management can use to detect patterns. They also highlight the sources of the variations—whether machine, human, or both. These new insights make it possible to set targets that can be communicated plant-wide and used as steppingstones for continuous improvement.

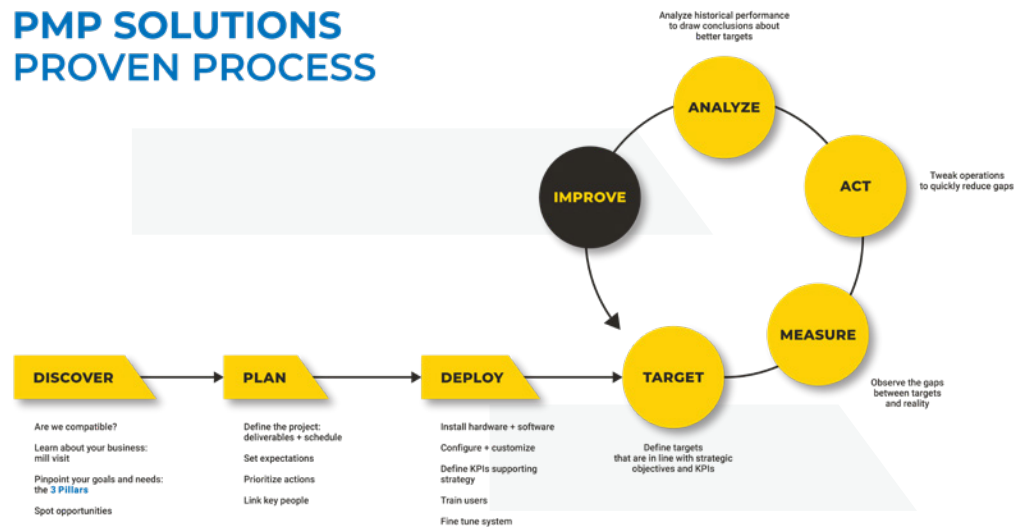
RESPOND TO ISSUES FASTER

Observation and analysis enable you to set new goals. Use your data-driven goals to configure PMP WESaw dashboards to enable operators to be more responsive in real time, effectively optimizing your log diet, improving lumber recovery rates, and maximizing operational effectiveness. PMP WESaw dashboards display the same data appearing in reports—with little to no manipulation.

DRIVE CONTINUOUS IMPROVEMENT

With the right data from PMP WeSaw available to every stakeholder—from operators to management—everyone can confidently demonstrate that they're working well. This way, you can enter—as a team—into a cycle of measurement, analysis, and observation that will drive your goals in an endless continuous improvement loop that will affect the entire mill.

PMP SOLUTIONS PROVEN PROCESS

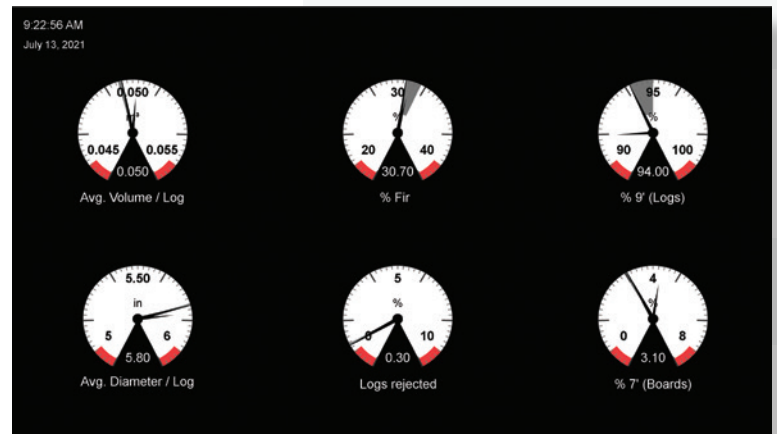


FEATURES

Beyond coming standard with the full history of production and downtimes, analysis-ready reports, and configurable alerts, PMP WeSaw features:

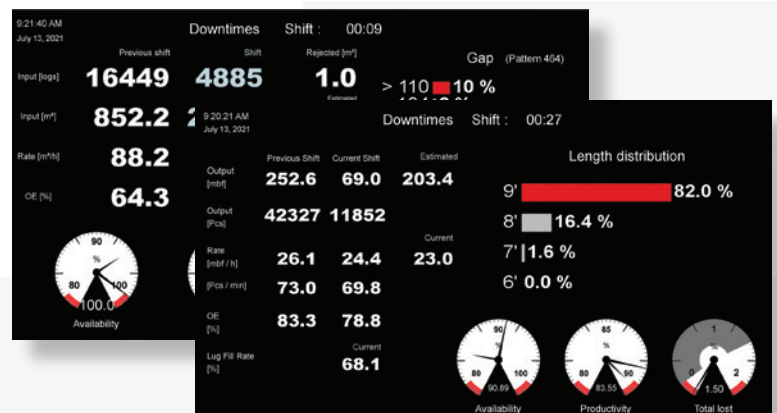
LOG DIET DASHBOARD

This dashboard shows the infeed operator the log distribution coming into the sawmill and whether it is within the desired product mix limits, helping optimize the log diet.



PERFORMANCE DASHBOARDS

These dashboards display information about production, downtimes, outputs, and more, at primary breakdown and trimming. Operators can immediately act on undesired variations in production, understanding whether it's operational or warrants maintenance.



DIMENSIONS DASHBOARD

This dashboard ensures sawing performs within desired parameters, giving real-time indications to operators whether dimensions are acceptable before going to trimming. This enables operators to adjust breakdown systems, when necessary.



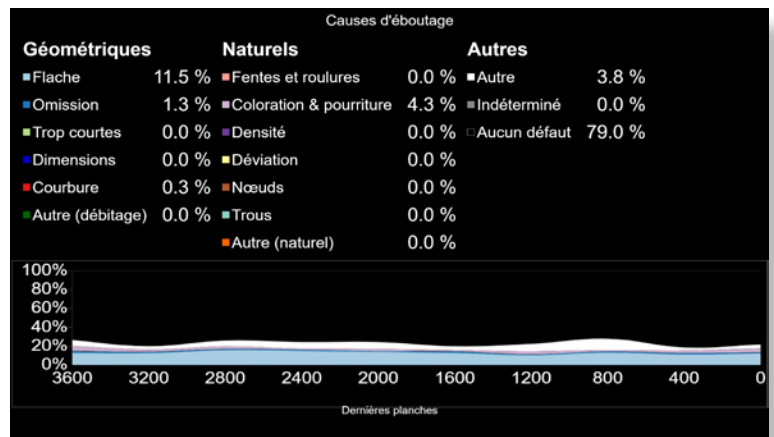
QUALITY DASHBOARD

This dashboard displays the quality of the lumber currently being produced by the sawmill. Through this dashboard, users can use recirculation and lumber recovery to assess issues with primary breakdown equipment.



TRIM DISTRIBUTION DASHBOARD

Reports the real-time trimming distribution, offering insights on equipment calibration and optimizer efficiency.



DRIVING
WOOD
TRANSFORMATION™

300 Dieppe Street
Québec (QC) G1N 3M8
CANADA

+1 581-891-7677
info@pmpsolutions.ca
pmpsolutions.ca

The information in this document is accurate as of its publication. Actual products may differ from those presented herein.

© 2022 PMP SOLUTIONS. PMP SOLUTIONS, PMP TEAMMATE, PMP WeSaw, PMP WeDry, PMP WePlane, PMP WeTrack, PMP WeSchedule, and their associated logos and slogans are trademarks or registered trademarks of MES-PMP SOLUTIONS, Inc. in the United States and / or other countries. PMP SOLUTIONS reserves the right to change product offerings and specifications without notice.